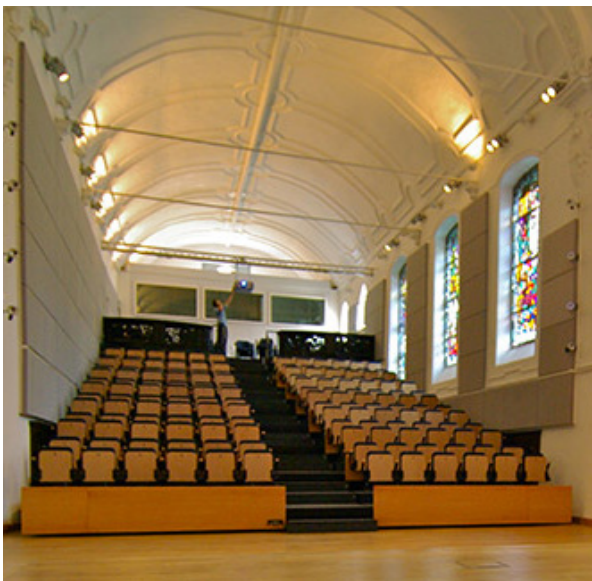


AUDITORIUM



This once 17th century chapel has been converted into a modern multi-purpose auditorium.

The auditorium can be used for large conferences, concerts or banquet dinners. The space is designed in flexible way that allows the area to be adapted to client's requirements. The tiered seating system is retractable and can left out or retracted depending on the clients' needs. The auditorium is equipped with a built-in sound system, audio and visual connections points, Wi-Fi and fixed line internet points, theatre style lighting, raised stage area with a moveable podium and fully operational translations booths.



View from stage

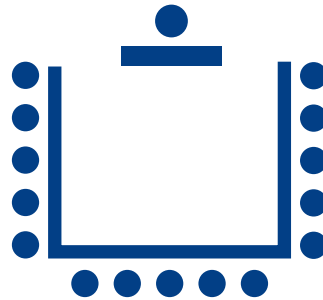


View from balcony

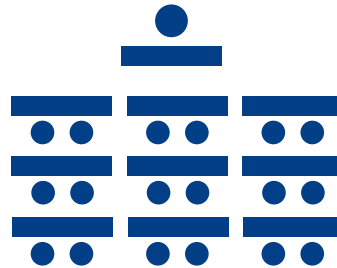
Capacity for conferences

This room is fully equipped with a projector, screen, audio visual equipment, translation booths and internet access.

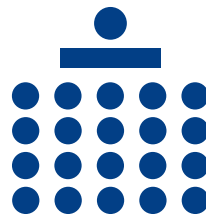
U shape
up to 48 people



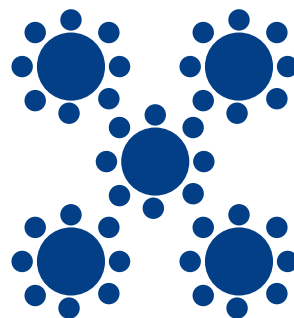
Classroom
up to 84 people



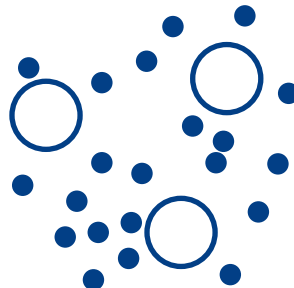
Theater
up to 223 people



**Cabaret/
working groups**
up to 72 people



Cocktail/walking
up to 180 people



Capacity for concerts.



Auditorium in use for a concert

The auditorium can seat a maximum of 223 people for concerts or similar events.



Auditorium in use for a concert

Tribune (retractable seats):	168 people
Front Seating Area:	40 people
Balcony:	15 people